

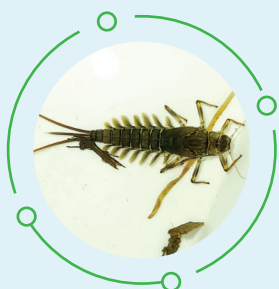


**biosphere**  
Enviro Solutions

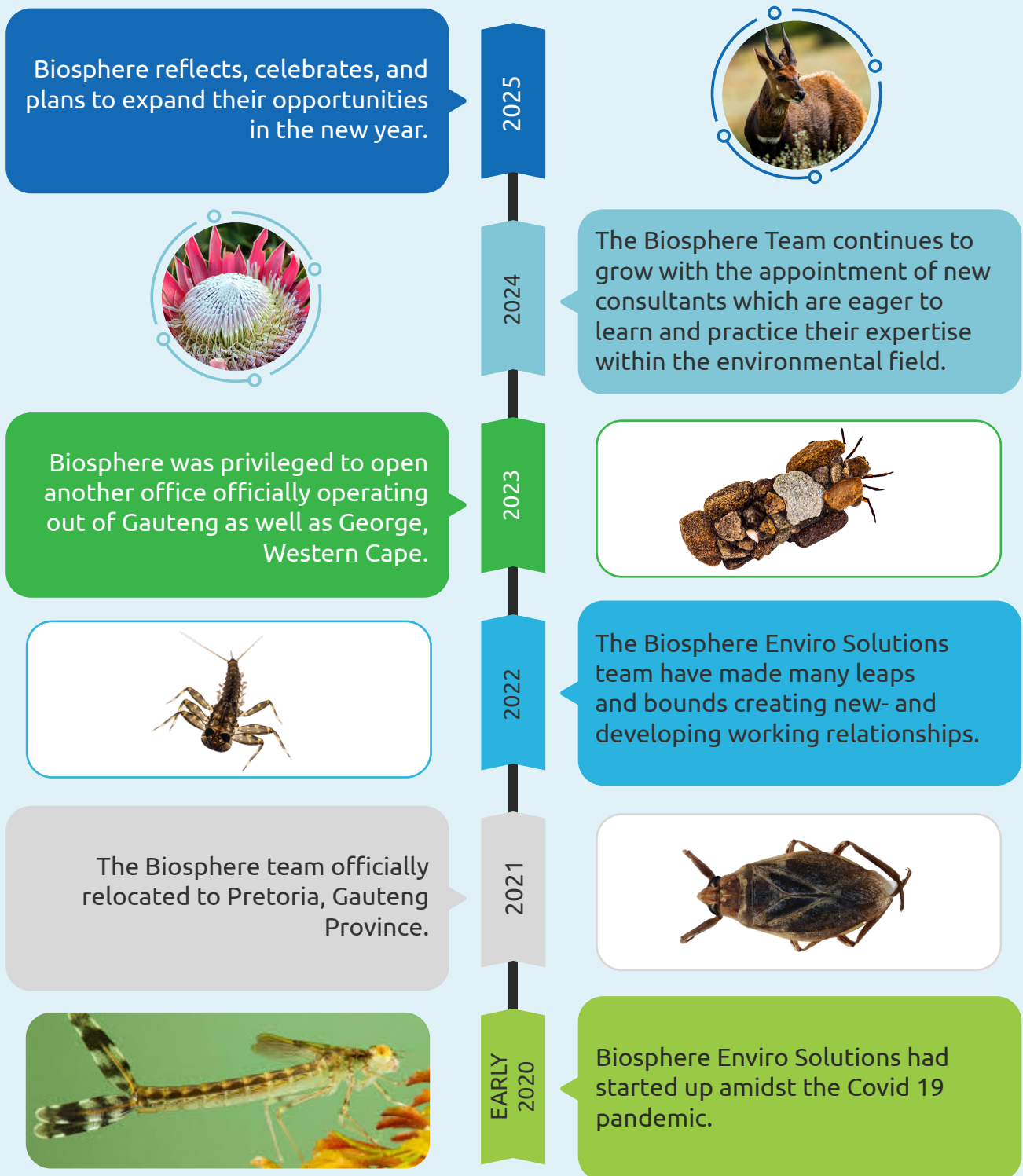


# COMPANY PROFILE

2025



# BACKGROUND



# ABOUT US

Biosphere Enviro Solutions (Pty) Ltd is here to provide the highest quality of service to our clients and maintain high levels of professional ethics and admirable core values. Our goal is to be top of the list of preferred strategic partners in the field of environment and sustainable consulting.

Our mission is to emphasize continuous environmental improvement, promote sustainable development, commit to even the most challenging of projects and emphasize compliance with relevant environmental and water related laws and regulations.

We strive to provide the best possible services for our clients while encouraging environmental solutions in all aspects.

# QUALITY ASSURANCE



## SCOPE OF WORK

To undertake project work in accordance with the defined scope of work, agreed between Biosphere and its clients.



## COMPLIANCE

To ensure that all technical work is performed in accordance with the relevant published standards, codes of practice, specifications, recognized professional guidance, statutory documents and other considerations.



## TIME & BUDGET

To complete technical work within agreed time and financial budgets.



## QMS

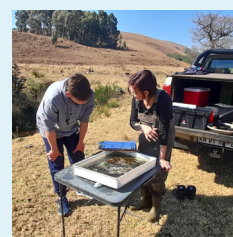
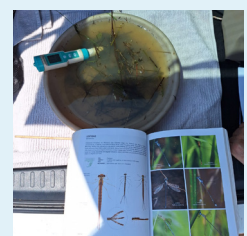
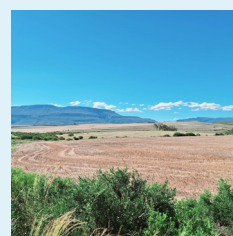
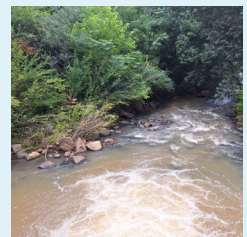
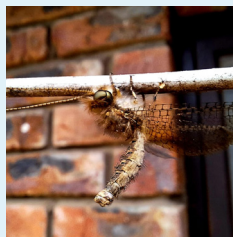
To carry out activities in accordance with established Quality Management Systems.



## CONTINUAL REVIEW

To review and update technical skills and management practices to continually improve service to Clients.

# GALLERY



# SERVICES



## Water Management Services

- Water Use License Applications (WULA's)
- General Authorisations (GA)
- Water Use License Amendment Applications
- Water Use License Compliance Monitoring
- Existing Lawful Water Uses (ELU) determination/assistance
- External Water Use License Audits
- Internal Water Use License Audit Assistance
- Water Quality Database Management
- Water Use License Facilitation
- Project Management
- Water Conservation Demand Management Plan



[READ MORE](#)



## Environmental Management Services

- Full Environmental Impact Assessments (EIA's)
- Basic Environmental Impact Assessments
- Environmental Scoping Reports
- Environmental Management Plans
- Waste License Applications
- Waste License Variation applications
- Environmental Compliance Monitoring (ECO)
- Public Participation Facilitation/consulting
- Pre-feasibility Assessments
- Environmental Management Frameworks



## Specialist Services

- Aquatic Ecological Assessments (macro-invertebrates) – Bio-monitoring
- Fish Response Assessment Index (FRAI)
- Riparian Vegetation Response Assessments (VEGRAI)
- Wetland Assessments (Wetland Verifications, Delineations & Rehabilitation Assessments)
- Geographical Information Systems (GIS)
- Surface Water Assessments
- Groundwater Quality Monitoring
- Terrestrial Biodiversity Assessments (Fauna & Flora)
- Dust Monitoring and Management

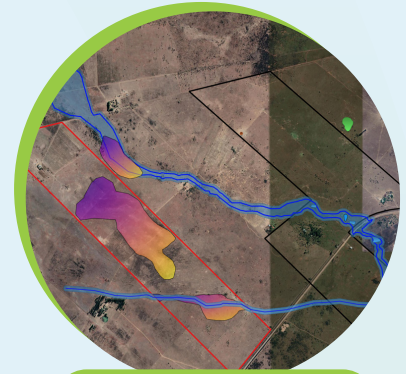


# SPECIALIST SERVICES



## Wetland Services

- Wetland Opinions/ Verifications
- Wetland Classifications/ Present Ecological
- State (PES), Recommended Ecological Class (REC) / Ecological Importance & Sensitivity
- DWS Wetland Risk Assessment/ Matrix
- Wetland Delineations and Assessments



[READ MORE](#)



## Groundwater Resource Development (Quantity & Quality)

- Desktop Analysis
- Hydrocensus Survey
- Geophysical investigations
- Borehole Drilling Supervision
- Borehole Design and Construction
- Aquifer Testing & Supervision (Pumping Tests – 8 to 24 hrs)
- Water Quality Assessment
- Water Use and Registration
- Wellfield Planning & Design
- Database Management & GIS
- Aquifer Monitoring & Management

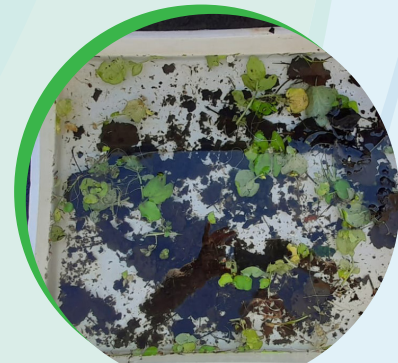


[READ MORE](#)



## Aquatic Ecology

- Determining the ecological state of aquatic ecosystems
- Assessing the spatial and temporal trends
- Assessing emerging problems
- Setting objectives for rivers using SASS5 and IHAS methodologies
- Predicting changes in the ecosystems
- Contribute to the determination of the Ecological Reserve (National Water Act 1998)

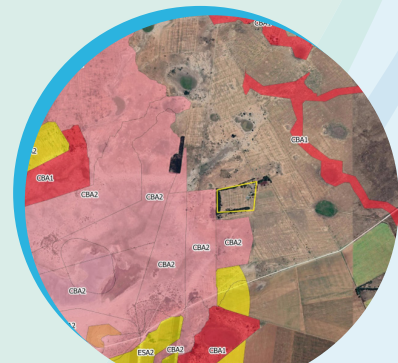


[READ MORE](#)



## Terrestrial Biodiversity

- Biodiversity Impact Assessments
- Plant and Animal Species Plans
- Critical Habitat Assessments
- Protected Tree Surveys
- Protected Tree Removal License Flora Permits
- Search, Rescue and Relocation Plans
- Biodiversity Offsets
- Declared Invader Plant Species Surveys



[READ MORE](#)

# KEY PROJECT PORTFOLIO

Client	Project	Activity Description
	Kinross Afgri Silos (Evander, Mpumalanga)	External Water Use Licence Audit Aquatic Functionality Assessment Wetland Rehabilitation Plan
	Food Manufacturing – Grocery Division (Randfontein, Gauteng)	Water Use Licence Application Integrated Water and Waste Management Plan Dust Management Plan Wetland Assessment
	Mount Grace Hotel and Spa (Magaliesburg, Gauteng) Birchwood Hotel and Conference Centre (Benoni, Gauteng)	Water Use Licence Applications
	N4 ALZU Petroport (Middelburg, Gauteng) Kwaggafontein Piggery (Middelburg, Gauteng) Springtop Piggery (Magaliesburg, Gauteng)	Aquatic Ecological Assessments External Water Use Licence Audits Water Quality Monitoring Water Use Licence Applications Wetland and Dam Rehabilitation Plans Alien Invasive Plant Management Plan Water Conservation and Demand Management Plan
	Sannieshof WWTW (Sannieshof, Northwest) Environmental Management Strategy (Ceres, Western Cape)	Wetland and River Rehabilitation Plan Integrated Water and Waste Management Plan Freshwater Assessment Water Quality Monitoring
	Phadima Solar PV (Fochville, Northwest) Rivierplaats Solar PV (Sasolburg, Free State) Orkney Solar PV (Orkney, Northwest) San Solar PV Risk Matrix (Northern Cape)	Freshwater Assessment Terrestrial Biodiversity Assessment Wetland Assessment Risk Assessment Matrix Aquatic Ecological Assessment
	NAOS Solar PVs (Orkney, Northwest)	General Authorisations





# KEY PROJECT PORTFOLIO

(Continued)

Client	Project	Activity Description
	<p>Royal Bafokeng Platinum (BRPM Mine) (Rustenburg, Northwest)                      Royal Bafokeng Platinum (Maseve Mine) (Rustenburg, Northwest)</p>	<p>Update of Integrated Water and Waste Management Plan</p>
	<p>Sanlameer Estate (Sanlameer, Kwa-Zulu Natal)                      Midstream Estate (Olifantsfontein, Gauteng)</p>	<p>Aquatic Ecological Assessments                      Wetland Assessments</p>
	<p>Oranje Hospital (Bloemfontein, Free State)                      Blue Route Mall (Cape Town, Western Cape)                      Kenilworth Centre (Cape Town, Western Cape)</p>	<p>Water Use Licence Applications</p>
	<p>Multiple Dams across Southern Africa</p>	<p>Tendering Process in support of Water Use Licence Applications</p>
	<p>Lintia Boerdery (Piggery), Fochville, Northwest                      Rica Piggery, Magalies, Gauteng Province                      Rica Meats Abattoir and Piggery, Randfontein, Gauteng Province</p>	<p>Aquatic Ecological Assessments                      External Water Use Licence Audits                      Water Quality Monitoring                      Water Use Licence Applications                      Wetland and Dam Rehabilitation Plans                      Alien Invasive Plant Management Plan                      Water Conservation and Demand Management Plan</p>
	<p>Peach Trees Development, Diepsloot, Gauteng Province                      Balwin Properties – Thaba Eco Village, Eikenhof, Gauteng Province                      Balwin Properties – Munyaka and Jukskei View, Midrand, Gauteng Province                      Kameeldift Voere, Cullinan, Limpopo Province                      The Hills Development, Mooikloof Heights, Gauteng Province</p>	<p>Aquatic Ecological Assessments                      Biomonitoring Programmes                      Water Quality Assessments</p>

# KEY PROJECT PORTFOLIO

(Continued)

Client	Project	Activity Description
 <p><b>PSP CONSULT</b> STRUCTURES   FUEL   FIRE   CIVIL</p>	Moov Fuel, Citrusdal, Western Cape	Water Use License Application Process Aquatic Ecological Assessment
 <p><b>energy TEAM</b></p>	Various Photovoltaic Solar Energy Facilities, North West, Eastern Cape and Free State Province	Water Use License Applications and General Authorisations
 <p><b>WITZENBERG</b> Municipality • Munisipaliteit • UMasipala Wase</p>	Ceres Maintenance Management Plan (MMP), Witzenberg Municipality, Western Cape Province	Freshwater Impact Assessment
 <p><b>MWTS</b> My Water Treatment Services</p>	Various residential, commercial and industrial developments, Johannesburg, Pretoria and Ekurhuleni, Gauteng Province.	Water Use License Applications, Wetland Assessments.





# THE TEAM



## Justin Bezuidenhout

**Principal Environmental and Water Use License Consultant  
| Reg. EAP 2019/748 and Accredited Aquatic Ecologist**

Justin has eleven (11) years' experience within the Environmental and Water Management Sector. Justin's key focus areas lie within the Water Resource Management, Aquatic Ecology, Project Management and Financial Management. Justin has been involved in projects for some of South Africa's biggest companies in sectors ranging from agriculture, residential, mining and food production. Justin has since grown exponentially into his director and business management role of the company with his duties including (but not limited to), Business and Financial Planning/ Management

(accounting, hiring and payroll), Operation Management (work sourcing and project management) and Strategizing (company growth, marketing and business planning).

Justin holds Bachelor of Art's Degree in Geography and Environmental Management & National Diploma in Disaster Risk Management. He is also a registered Environmental Assessment Practitioner and Accredited Aquatic Ecologist.

He has had the privilege to be part of various projects within the environmental sector, undertaking a wide variety of roles and responsibilities within South Africa and the UK. His duties in South Africa included Project Management, the compilation of Water Use License Applications (WULA's), performing Environmental Feasibility Studies, Environmental Impact Assessments (EIA's), conducting Environmental Compliance Monitoring (ECO), Surface Water Assessments, and Aquatic Ecological Assessments.



## Suné Bezuidenhout

**Managing Director, Environmental Consultant and Accredited  
Aquatic Ecologist**

Suné has been actively working within the Environmental sector for approximately seven (7) years. Her working experience stretches from the compilation of Water Use Licence Applications, Waste Management Licence applications, Environmental Control Officer duties and Environmental Management Frameworks, as well as license/authorisation facilitation such as Surface and Ground Water Quality sampling, testing (in-situ and off site) and reporting, annual external auditing and long-term rehabilitation strategies.

She is an accredited SASS5 Practitioner. Her specialist field encompass Aquatic Ecological Assessments specifically for macroinvertebrates and Quantum GIS mapping. Suné now utilizes her acquired experience to grow in her role as project manager (define deliverables, team lead and awareness training). She also excels in her role of quality assurance (peer review, quality planning/ process development and document control) within the company.

She's had extensive experience with Environmental Control (ECO) work for industrial, residential, and agricultural developments across Southern Africa. She also has experience with different water quality testing equipment and conducting laboratory tests for Total Coliforms and E. coli.

# THE TEAM (continued)



## Shavona Moodley

**BSc Honours Hydrology, BSc Environmental Earth Science, Candidate EAP**

Shavona is a Water Use License Consultant with 5 years of professional experience working on environmental and water management projects. She obtained a BSc Honours in Hydrology and a BSc in Environmental Earth Science. She started her career in Environmental Consulting and has since moved her focus to Water Use License Consulting.

She has gained a unique, 360° perspective from her experience working with several client companies, government departments, and the public across various sectors. She has worked on several aspects of the

field, including applications for Water Use Licenses and General Authorisations, Water Use License Application Reports, Integrated Water and Waste Management Plans (IWWMP), Public Participation Processes, Mapping, Rehabilitation Plans, Water Conservation and Demand Management Plans, Monitoring and Auditing Plans. She has conducted Water Use License Auditing and ECO work. Shavona also has experience working on Basic Assessments.

Her background in Earth Sciences, coupled with her professional experience in water and environmental management consulting, allows her to approach water and environmental issues in a holistic manner. She is incredibly eager to continually enhance and develop her skills to become a well-rounded professional in the environmental and water management field.



## Dr. Elandrie Davoren

**Ecologist  
(Ph.D Environmental Science)**

Elandrie is an ecologist with one year of practical experience in Biodiversity and Wetland Assessments for Environmental Impact Assessments (EIA) and another year in Water Use License Applications (WULA). She completed her doctoral and post-doctoral research from 2011 to 2020, focusing on urban ecology, where she developed strong project management, time management, and data analysis skills.

Passionate about water conservation and the sustainable management of South Africa's water resources, Elandrie is committed to expanding her expertise in the environmental and water licensing sectors. Her goal is to deepen her knowledge of EIA, WULA, and the broader ecological landscape. To support this ambition, she actively seeks opportunities for further professional development, including relevant training courses and mentorship under Senior Ecologists.

Elandrie brings strong capabilities in data analysis, GIS, water sampling, monitoring and auditing, and report writing, making her a valuable asset to any environmental or ecological project.

# CONTACT US

Our goal is to be top of the list of preferred strategic partners in the field of environment and sustainable consulting. Please don't hesitate to get in touch with members of our team by:



+27 60 602 1922 | +27 66 218 2545



info@biosphere-enviro.co.za



www.biosphere-enviro.co.za



Pretoria East, Gauteng (Head Office) | Mossel Bay, Western Cape



biosphere-enviro-solutions



**biosphere**  
Enviro Solutions