

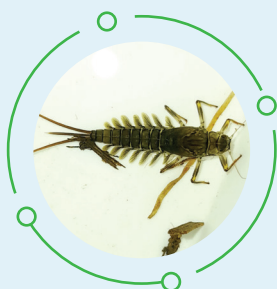


**biosphere**  
Enviro Solutions

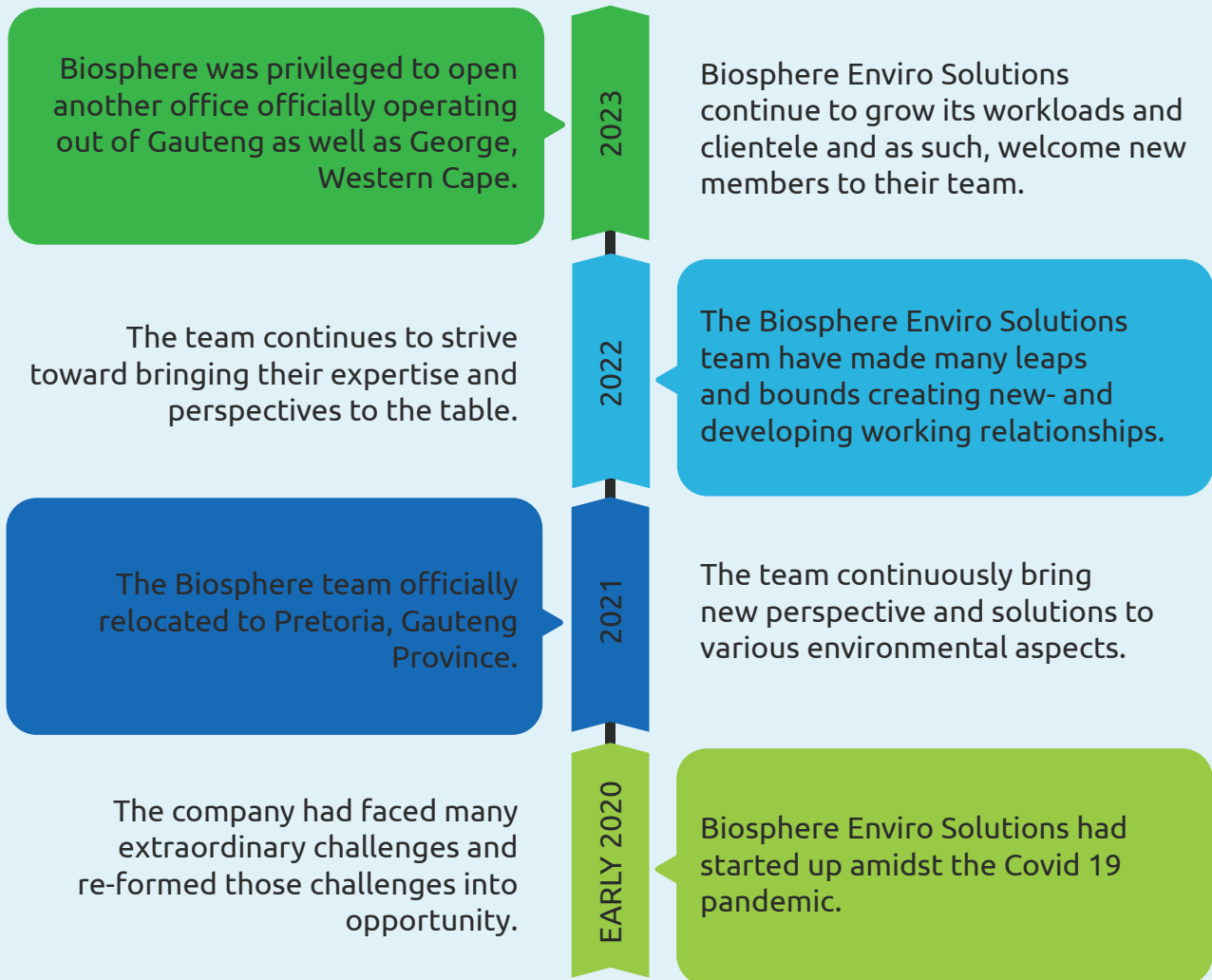


# COMPANY PROFILE

2023



# BACKGROUND



# ABOUT US

Biosphere Enviro Solutions (Pty) Ltd is here to provide the highest quality of service to our clients and maintain high levels of professional ethics and admirable core values. Our goal is to be top of the list of preferred strategic partners in the field of environment and sustainable consulting.

Our mission is to emphasize continuous environmental improvement, promote sustainable development, commit to even the most challenging of projects and emphasize compliance with relevant environmental and water related laws and regulations.

We strive to provide the best possible services for our clients while encouraging environmental solutions in all aspects.

# QUALITY ASSURANCE



## SCOPE OF WORK

To undertake project work in accordance with the defined scope of work, agreed between Biosphere and its clients.



## COMPLIANCE

To ensure that all technical work is performed in accordance with the relevant published standards, codes of practice, specifications, recognized professional guidance, statutory documents and other



## TIME & BUDGET

To complete technical work within agreed time and financial budgets.



## QMS

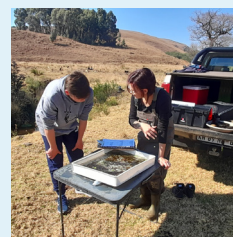
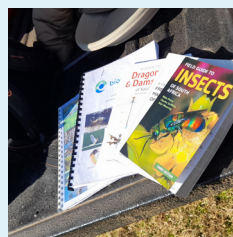
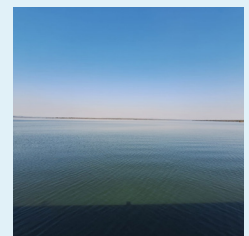
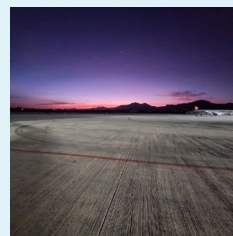
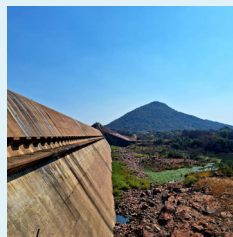
To carry out activities in accordance with established Quality Management Systems.



## CONTINUAL REVIEW

To review and update technical skills and management practices to continually improve service to Clients.

# GALLERY



# SERVICES



## Water Management Services

- Water Use License Applications (WULA's)
- General Authorisations (GA)
- Water Use License Amendment Applications
- Water Use License Compliance Monitoring
- Existing Lawful Water Uses (ELU) determination/assistance
- External Water Use License Audits
- Internal Water Use License Audit Assistance
- Water Quality Database Management
- Water Use License Facilitation
- Project Management
- Water Conservation Demand Management Plan



[READ MORE](#)



## Environmental Management Services

- Full Environmental Impact Assessments (EIA's)
- Basic Environmental Impact Assessments
- Environmental Scoping Reports
- Environmental Management Plans
- Waste License Applications
- Waste License Variation applications
- Environmental Compliance Monitoring (ECO)
- Public Participation Facilitation/consulting
- Pre-feasibility Assessments
- Environmental Management Frameworks



## Specialist Services

- Aquatic Ecological Assessments (macro-invertebrates) – Bio-monitoring
- Fish Response Assessment Index (FRAI)
- Riparian Vegetation Response Assessments (VEGRAI)
- Wetland Assessments (Wetland Verifications, Delineations & Rehabilitation Assessments)
- Geographical Information Systems (GIS)
- Surface Water Assessments
- Groundwater Quality Monitoring
- Terrestrial Biodiversity Assessments (Fauna & Flora)
- Dust Monitoring and Management

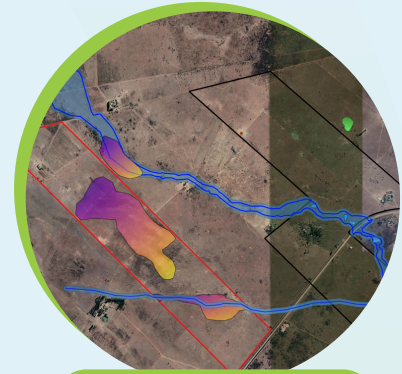


# SPECIALIST SERVICES



## Wetland Services

- Wetland Opinions/ Verifications
- Wetland Classifications/ Present Ecological
- State (PES), Recommended Ecological Class (REC) / Ecological Importance & Sensitivity
- DWS Wetland Risk Assessment/ Matrix
- Wetland Delineations and Assessments



[READ MORE](#)



## Groundwater Resource Development (Quantity & Quality)

- Desktop Analysis
- Hydrocensus Survey
- Geophysical investigations
- Borehole Drilling Supervision
- Borehole Design and Construction
- Aquifer Testing & Supervision (Pumping Tests – 8 to 24 hrs)
- Water Quality Assessment
- Water Use and Registration
- Wellfield Planning & Design
- Database Management & GIS
- Aquifer Monitoring & Management

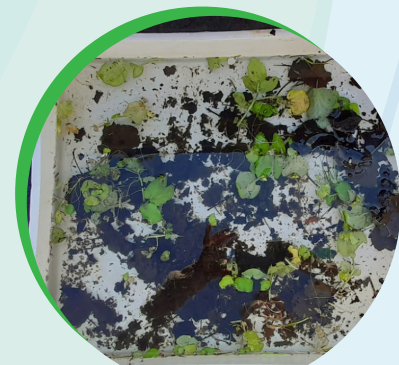


[READ MORE](#)



## Aquatic Ecology

- Determining the ecological state of aquatic ecosystems
- Assessing the spatial and temporal trends
- Assessing emerging problems
- Setting objectives for rivers using SASS5 and IHAS methodologies
- Predicting changes in the ecosystems
- Contribute to the determination of the Ecological Reserve (National Water Act 1998)

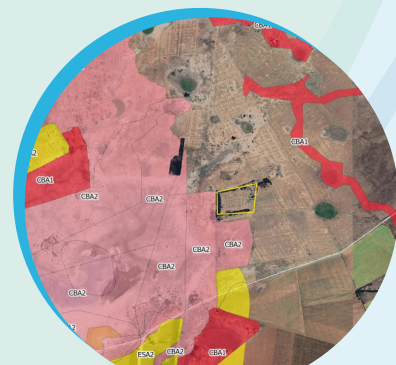


[READ MORE](#)



## Terrestrial Biodiversity

- Biodiversity Impact Assessments
- Plant and Animal Species Plans
- Critical Habitat Assessments
- Protected Tree Surveys
- Protected Tree Removal License Flora Permits
- Search, Rescue and Relocation Plans
- Biodiversity Offsets
- Declared Invader Plant Species Surveys



[READ MORE](#)

# KEY PROJECT PORTFOLIO

Client	Project	Activity Description
	Kinross Afgri Silos (Evander, Mpumalanga)	External Water Use Licence Audit Aquatic Functionality Assessment Wetland Rehabilitation Plan
	Food Manufacturing – Grocery Division (Randfontein, Gauteng)	Water Use Licence Application Integrated Water and Waste Management Plan Dust Management Plan Wetland Assessment
	Mount Grace Hotel and Spa (Magaliesburg, Gauteng) Birchwood Hotel and Conference Centre (Benoni, Gauteng)	Water Use Licence Applications
	N4 ALZU Petroport (Middelburg, Gauteng) Kwaggafontein Piggery (Middelburg, Gauteng) Springtop Piggery (Magaliesburg, Gauteng)	Aquatic Ecological Assessments External Water Use Licence Audits Water Quality Monitoring Water Use Licence Applications Wetland and Dam Rehabilitation Plans Alien Invasive Plant Management Plan Water Conservation and Demand Management Plan
	Sannieshof WWTW (Sannieshof, Northwest) Environmental Management Strategy (Ceres, Western Cape)	Wetland and River Rehabilitation Plan Integrated Water and Waste Management Plan Freshwater Assessment Water Quality Monitoring
	Phadima Solar PV (Fochville, Northwest) Rivierplaats Solar PV (Sasolburg, Free State) Orkney Solar PV (Orkney, Northwest) San Solar PV Risk Matrix (Northern Cape)	Freshwater Assessment Terrestrial Biodiversity Assessment Wetland Assessment Risk Assessment Matrix Aquatic Ecological Assessment
	NAOS Solar PVs (Orkney, Northwest)	General Authorisations

# KEY PROJECT PORTFOLIO

(Continued)

Client	Project	Activity Description
	Royal Bafokeng Platinum (BRPM Mine) (Rustenburg, Northwest) Royal Bafokeng Platinum (Maseve Mine) (Rustenburg, Northwest)	Update of Integrated Water and Waste Management Plan
	Sanlameer Estate (Sanlameer, Kwa-Zulu Natal) Midstream Estate (Olifantsfontein, Gauteng)	Aquatic Ecological Assessments Wetland Assessments
	Oranje Hospital (Bloemfontein, Free State) Blue Route Mall (Cape Town, Western Cape) Kenilworth Centre (Cape Town, Western Cape)	Water Use Licence Applications
	Multiple Dams across Southern Africa	Tendering Process in support of Water Use Licence Applications
	Lintia Boerdery (Piggery), Fochville, Northwest Rica Piggery, Magalies, Gauteng Province Rica Meats Abattoir and Piggery, Randfontein, Gauteng Province	Aquatic Ecological Assessments External Water Use Licence Audits Water Quality Monitoring Water Use Licence Applications Wetland and Dam Rehabilitation Plans Alien Invasive Plant Management Plan Water Conservation and Demand Management Plan
	Peach Trees Development, Diepsloot, Gauteng Province Balwin Properties – Thaba Eco Village, Eikenhof, Gauteng Province Balwin Properties – Munyaka and Jukskei View, Midrand, Gauteng Province Kameeldift Voere, Cullinan, Limpopo Province The Hills Development, Mooikloof Heights, Gauteng Province	Aquatic Ecological Assessments Biomonitoring Programmes Water Quality Assessments
	Moov Fuel, Citrusdal, Western Cape	Water Use License Application Process Aquatic Ecological Assessment

# THE FOUNDERS

---



## **Justin Bezuidenhout**

**Principal Environmental and Water Use License Consultant |  
Reg. EAP 2019/748 and Accredited Aquatic Ecologist**

Justin has nine (9) years' experience within the Environmental and Water Management Sector. Justin's key focus areas lie within the Water Resource Management, Aquatic Ecology, Project Management and Financial Management. Justin has been involved in projects for some of South Africa's biggest companies in sectors ranging from agriculture, residential, mining and food production.

Justin holds Bachelor of Art's Degree in Geography and Environmental Management & National Diploma in Disaster Risk Management. He is also a registered Environmental Assessment Practitioner and Accredited Aquatic Ecologist.

He has had the privilege to be part of various projects within the environmental sector, undertaking a wide variety of roles and responsibilities within South Africa and the UK. His duties in South Africa included Project Management, the compilation of Water Use License Applications (WULA's), performing Environmental Feasibility Studies, Environmental Impact Assessments (EIA's), conducting Environmental Compliance Monitoring (ECO), Surface Water Assessments, and Aquatic Ecological Assessments.



## **Suné Bezuidenhout**

**Managing Director, Environmental Consultant and Accredited  
Aquatic Ecologist**

Suné has been actively working within the Environmental sector for approximately five (5) years. Her working experience stretches from the compilation of Water Use Licence Applications, Waste Management Licence applications, Environmental Control Officer duties and Environmental Management Frameworks, as well as license/authorisation facilitation such as Surface and Ground Water Quality sampling, testing (in-situ and off site) and reporting, annual external auditing and long-term rehabilitation strategies.

She has recently obtained her accreditation as an Aquatic Ecologist. Her specialist field encompass Aquatic Ecological Assessments specifically for macroinvertebrates and Quantum GIS mapping.

She's had extensive experience with Environmental Control (ECO) work for industrial, residential, and agricultural developments across Southern Africa. She also has experience with different water quality testing equipment and conducting laboratory tests for Total Coliforms and E. coli.



# CONTACT US

---

Our goal is to be top of the list of preferred strategic partners in the field of environment and sustainable consulting. Please don't hesitate to get in touch with members of our team by:



+27 60 602 1922 | +27 66 218 2545



info@biosphere-enviro.co.za



www.biosphere-enviro.co.za



Pretoria East, Gauteng (Head Office) | Mossel Bay, Western Cape



biosphere-enviro-solutions



biosphere\_enviro\_solutions



**biosphere**  
Enviro Solutions

